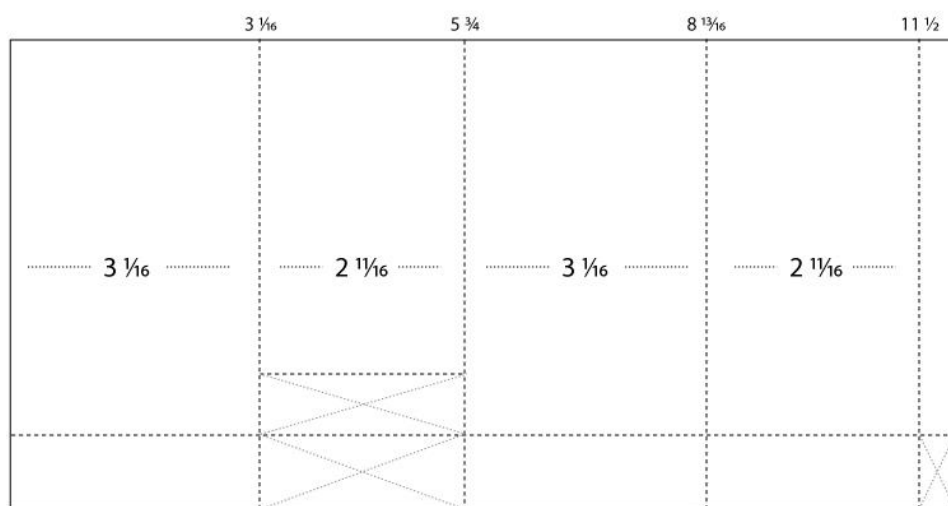




What you will need to make this project

(example shown here: [stamprightup.wordpress.com/2013/05/03/stampin-up-tea-bag-dispenser-gift-box-new-cataloge-item-sneak-preview/](http://stamprightup.wordpress.com/2013/05/03/stampin-up-tea-bag-dispenser-gift-box-new-cataloge-item-sneak-preview/) )

- 12x12 card stock in Old Olive
- Everyday Enchantment DSP (or two designs of coordinating DSP of your choice)
- Chipboard or extra thick card stock



Starting with 6 x 12" solid cardstock:

- score at 1" parallel to the long edge,
- score at  $3 \frac{1}{16}$ ,  $5 \frac{3}{4}$ ,  $8 \frac{13}{16}$ ,  $11 \frac{1}{2}$  parallel to the short edge
- Score  $\frac{3}{4}$ " above the 1" score line in the SECOND SEGMENT ONLY (see photo).
- Cut out the  $1 \frac{3}{4}$  x  $2 \frac{3}{4}$  piece from the bottom of the second segment and  $\frac{1}{2}$  x 1" corner piece. Cut between the remaining 1" flaps.

FOR THE LID:

- Cut a piece of  $4 \frac{1}{4}$  x  $4 \frac{5}{8}$  piece of solid cardstock
- Score at  $\frac{3}{4}$ " on all sides.
- Cut and taper the corners



#### DECORATIVE MATTING:

- Very Vanilla:  
 $2 \frac{3}{4} \times 4 \frac{3}{4}$  (2 pieces)  
 $2 \frac{3}{8} \times 4 \frac{3}{4}$   
 $2 \frac{3}{8} \times 4"$
- DSP ~ top half of matting:  
 $2 \frac{5}{8} \times 2 \frac{5}{16}$  (2 pieces)  
 $2 \frac{1}{4} \times 2 \frac{5}{16}$  (2 pieces)
- DSP ~ bottom half of matting:  
 $2 \frac{5}{8} \times 2 \frac{5}{16}$  (2 pieces)  
 $2 \frac{1}{4} \times 2 \frac{5}{16}$   
 $2 \frac{1}{4} \times 1 \frac{9}{16}$
- DSP for lid  
 $2 \frac{1}{2} \times 2 \frac{7}{8}"$
- DSP for lid edge:  
 $\frac{1}{2} \times 2 \frac{1}{2}"$   
 $\frac{1}{2} \times 2 \frac{7}{8}"$
- Chipboard base, covered with solid card stock :  $3 \times 3 \frac{3}{8}"$

You will note that the matting for the front of the box is too long – I did not record the measurements correctly for the front, so you will have to trim to size; then use an oval punch to create a half moon at the bottom of the front mat – this is optional and just add a more decorative look.